



ecotherm.solutions

HEAT PUMP ECT50 AIR- TO-AIR HEAT PUMP



MADE IN GERMANY



www.ecotherm.solutions

OVERVIEW



01 Our vision

02 Our product

03 Stackability

04 Transport

05 Dashboard

06 Oil heating vs. heat pump

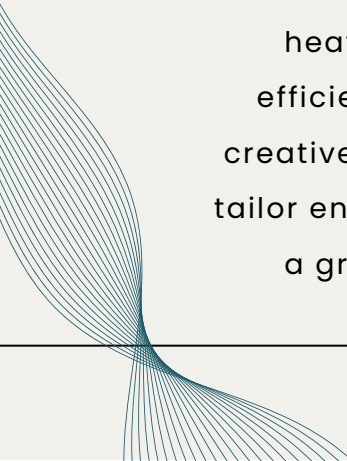
07 Our partner



OUR VISION

Shaping a Sustainable Tomorrow with ecotherm.solutions

At ecotherm.solutions, our vision transcends the conventional. We envision a future where construction and power solutions harmonize seamlessly with the environment, leaving a minimal ecological footprint. Committed to 100% fossil-free practices, our focus extends beyond business success to a profound responsibility – a responsibility to curate construction sites that champion emission-free operations. Our cutting-edge technology exemplifies our dedication, providing both building heating and drying with unrivaled efficiency. Embracing innovation and creative solutions, we partner with you to tailor energy-efficient strategies, ensuring a greener, faster, and sustainable tomorrow.



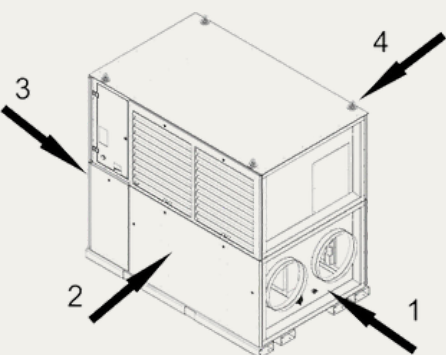
OUR PRODUCT

HEAT PUMP ECT50

The heat pumps are installed on a level and solid surface, then connected with hoses for warm and cold air. After connecting to a mobile power supply, the heat pump is operable immediately. They are very variable in terms of installation and flexible in use.

A hose system can distribute the conditioned air. In addition, external compression of 400 Pa enables air distribution within rooms. Apart from setting the target temperature via web browser or touchpanel, there are no other steps needed for the startup.

The air-air heat pump measures the aspirated ambient temperature and regulates to the predefined target temperature even under extreme conditions. In winter the evaporator coil defrosts through a circuit with a heated gas. So, the interior air is not affected by this process.

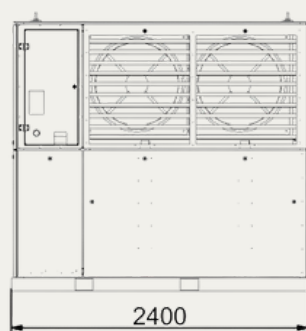
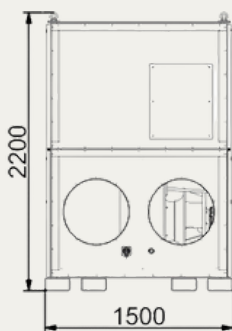


1 connection point

2 control unit

3 compressor

4 longitudinal side

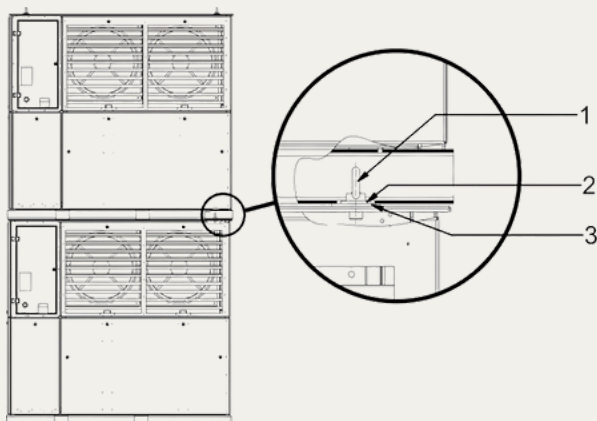


GENERAL DATA

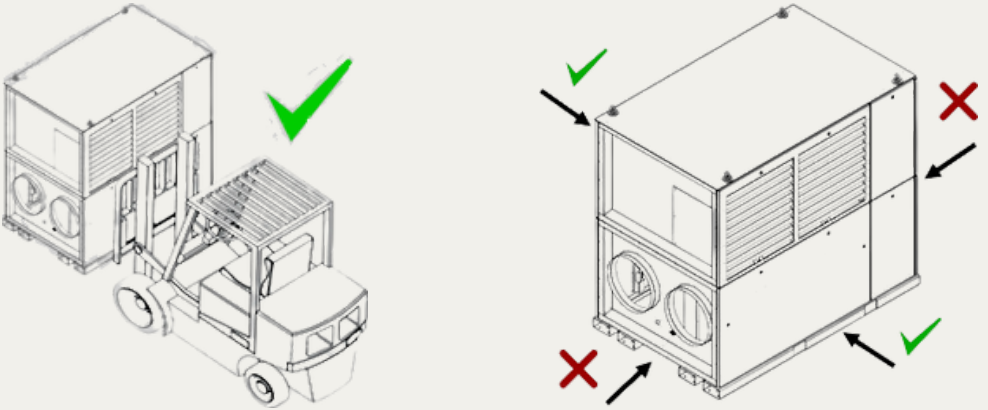
› air-to-air heat pump	
› heating mode	
› operation ambient temperature	-25°C to +25°C
› ambient temperature for transportation and storing	-25°C to +40°C
› heating capacity (A7/L35)	50,1 kW
› nominal air flow	8000 m ³ /h
› external compression	400 Pa
› electrical connection	400 V 3 PH 50 Hz
› plug type	32A CEE
› max. rated current	31 A
› max. condensate quantity	10 l/h
› connection air hoses	ø 525 mm
› external dimensions	B 2.400 x H 2.250 x T 1.500 (mm)
› mass	1.500 kg

STACKABILITY

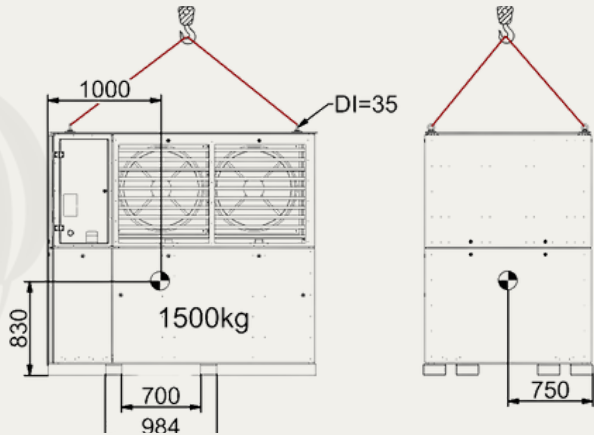
the machine can be stacked as shown in the image. the holes in the base profiles of the machine are threaded over the lock ring (1). the disc (3) is used to protect the roof of the lower machine. The disc (2) helps to center the upper machine on the lower one.



TRANSPORT



During transport, the maximum shock load of 1.5g must not be exceeded. Before starting operation, an alarm check must be conducted. If an alarm is activated, the system must not be put into operation and must be inspected by qualified personnel for full functionality and damages.



DASHBOARD

Overview of all heat pumps: Operating conditions, performance, and temperature

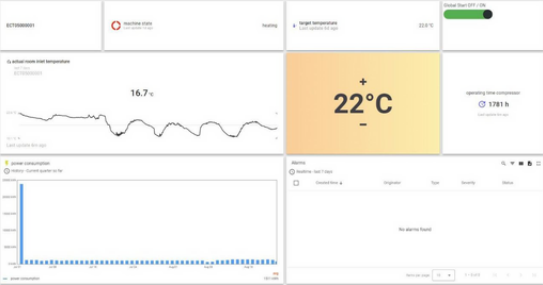
online22

error0

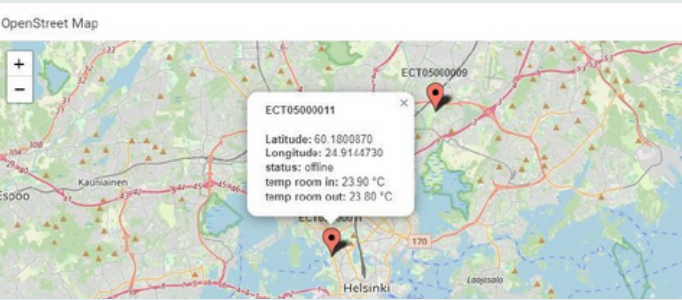
offline2

ECT overview						
unit id	heating capacity	cooling capacity	total electrical power	current outdoor temperature	current indoor temperature	target temperature
ECT05000001	0.0 kW	0.0 kW	0.0 kW	21.6 °C	20.4 °C	19.0 °C
ECT05000001	37.1 kW	36.7 kW	16.6 kW	16.7 °C	16.7 °C	20.0 °C
ECT05000002	47.1 kW	36.1 kW	16.6 kW	46.6 °C	19.8 °C	20.0 °C
ECT05000003	0.0 kW	0.0 kW	0.0 kW	20.4 °C	20.0 °C	20.0 °C
ECT05000004	0.0 kW	0.0 kW	0.0 kW	21.6 °C	20.3 °C	19.0 °C
ECT05000005	0.0 kW	0.0 kW	0.0 kW	11.1 °C	16.6 °C	16.0 °C
ECT05000006	0.0 kW	0.0 kW	0.0 kW	20.3 °C	20.0 °C	19.0 °C
ECT05000007	0.0 kW	0.0 kW	0.0 kW	17.6 °C	17.6 °C	16.0 °C

Real-time overview of temperature, heating status, and energy consumption



Centralized monitoring of all heat pumps with real-time status and temperature data



OIL HEATING VS. HEAT PUMP

High CO₂ emissions

No CO₂ emissions

Needs a lot of space

Space-saving

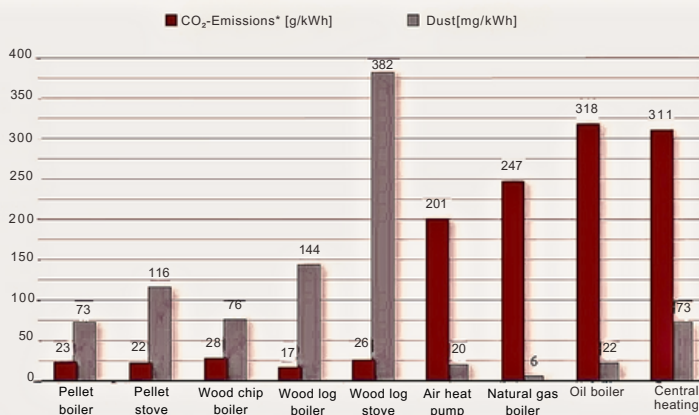
Installation is prohibited from 2024

Funded

Unstable Oil Price and Rising CO₂ Prices

Stable electricity prices

Dust and CO₂ emissions from heating systems



Source: Federal Environment Agency 2018: Emissions balance of renewable energy sources. Values refer to the Asset inventory and power mix in 2017.

*CO₂ equivalent incl. methane and nitrous oxide; **without water heating; less than or equal to 50 kW

Status: 2018


Deutsches Pelletinstitut GmbH

OUR PARTNER

LEASING



ABC Finance provides innovative financing solutions, including leasing, factoring, and asset financing, to support businesses facing investment, growth, or revenue expansion needs. With a focus on protecting and enhancing customer liquidity, ABC Finance fosters long-term partnerships, offering both digital communication options and personalized assistance, reflecting their commitment to empowering entrepreneurs.

 abc finance locations in Netherlands, Germany and Austria



CONTACT US

contact@ecotherm.solutions

Kolchis GmbH

Wolfsgasse 3

D-01099 Dresden

LINKEDIN



MADE IN GERMANY

www.ecotherm.solutions